



radiustrack®

THE ART AND SCIENCE OF SIMPLIFYING THE CURVE

QUALIFICATIONS SUBMITTAL

Unitized Framing Solutions

Radius Track Corporation

www.radiustrack.com • 888.872.3487 • info@radiustrack.com

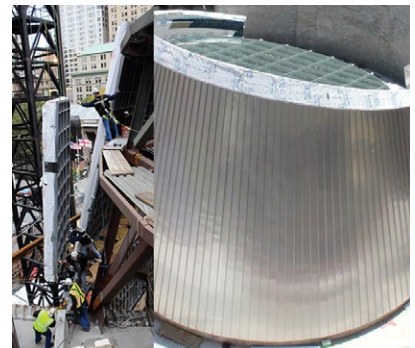
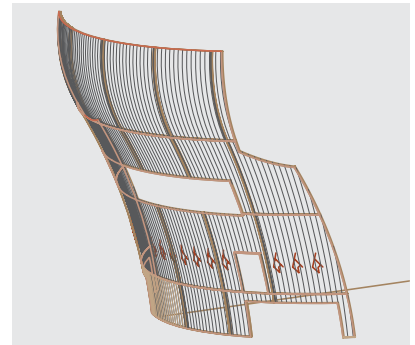
OVERVIEW

With decades of experience and tens of thousands of successfully completed projects, Radius Track Corporation pioneered pre-curved cold-formed steel (CFS) framing solutions. Our expertise stems from breakthrough non-structural and structural framing technology that frees architects to design and contractors to execute curved and complex surfaces with efficiency and precision.

Since the first patented invention, Radius Track® expanded manufacturing capabilities to join a custom-designed Computer Numeric Controlled Bending (CNCB) system with large machines to automatically fabricate custom formed framing profiles. Much more than a manufacturer of precision CFS framing, Radius Track® understands architecture, interior design, BIM, and framing. Our design team works with architects, engineers, construction managers, and contractors to translate design intent into constructible framing solutions through 3D modeling, data management, coordination, and CNC fabrication. Our solutions are grouped into four categories:

- **Design Assist BIM/3D Modeling**
- **Curved-Right® Custom Framing**
- **Unitized Framing Solutions**

Radius Track is a privately owned and operated corporation dedicated to providing constructible solutions for innovative designs using teamwork, coordination, technology, and experience. Whether we are working with you to design framing for a doubly curved feature wall, a grand dome with inset windows, a truncated conical unitized façade supporting an oculus, or furring for a curved wall, our goal is to provide a framing solution to meet the design intent and project specifications on time, within budget.





National Center for Civil and Human Rights

Atlanta, GA • Architect: Freelon Group(Perkins+Will)/HOK

Awards

- 2014 Best of Year, Exhibitions category – Interior Design Magazine*
- Best in Design – Atlanta Business Chronicle's Best in Real Estate Awards*
- Development of Excellence Award - Urban Land Institute Atlanta*



Fulton Transit Center

New York, NY • Architect: Grimshaw Architects

Awards

- 2012 Annual Excellence Award – Walls and Ceilings Magazine**
- 2014 Project of the Year Award – NYS Society of Professional Engineers*
- 2014 Brunel Award Commendation recognizing excellence in Architecture & Design: Railway*

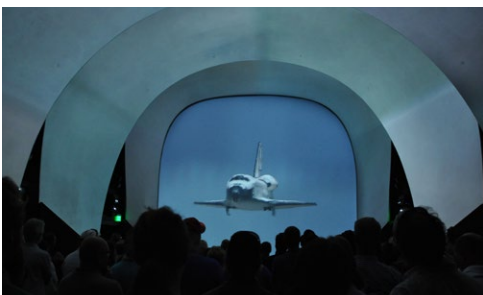


Port Canaveral Exploration Tower & Welcome Center

Port Canaveral, FL • Architect: GWWO Inc./Architects

Awards

- 2014 People's Choice Award – AIA Florida*
- Metal Construction Association 2014 Chairman's Award*



Space Shuttle Atlantis Attraction

Kennedy Space Center Visitor Complex
Titusville, FL • Architect: PGAV Destinations

Awards

- 2013 CISCA Construction Excellence Award**
- 2014 AAM Multimedia Installation Muse Award – American Alliance of Museums*



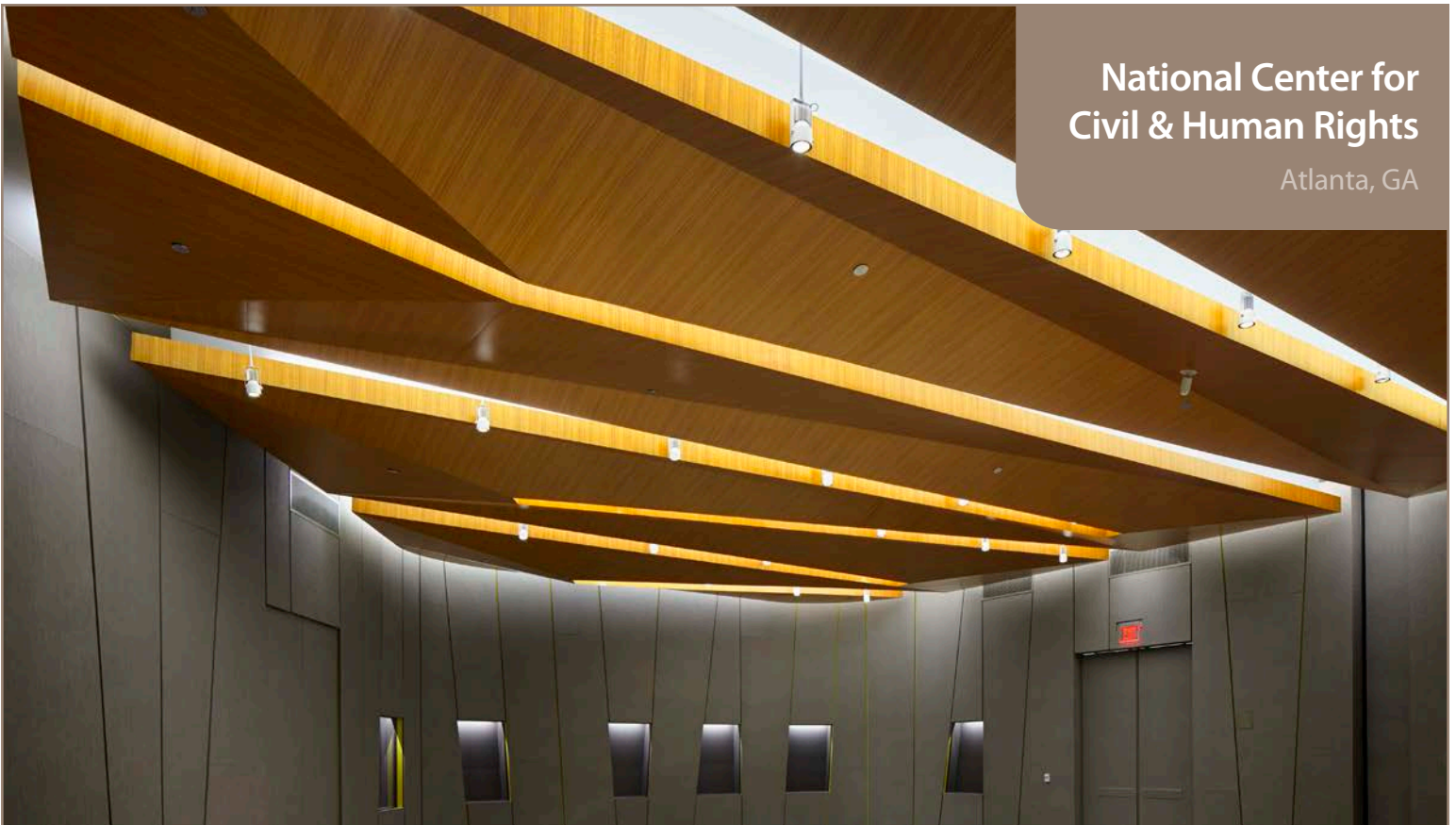
Hard Rock Café

Tampa, FL • Design Architect: Klai Juba Architects,
Project Architect: HKS Architecture

* Project Awards, ** Radius Track Awards

National Center for Civil & Human Rights

Atlanta, GA



Multi-faceted zigzagged National ceiling made perfectly!

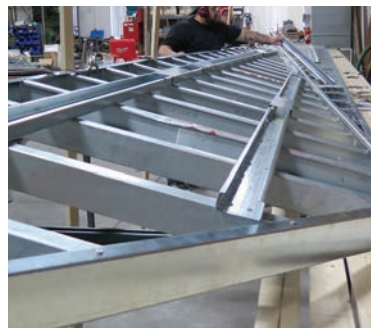
Architect: Freelon Group(Perkins+Will)/HOK

General Contractor: H.J.Russell&Co., C.D. Moody Construction Co.,
Holder Construction Co.

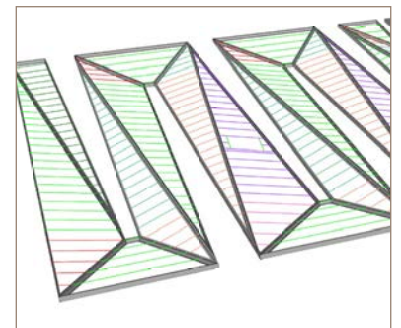
Sub Contractor: Principle Partners, Inc.

Unitized Framing Solution Provider: Radius Track Corporation

To expedite construction, Radius Track® panelized the multi-faceted suspended ceiling that zigzagged above NCCHR's 2500 sf special events room.



The light weight of the CFS framing, sequenced according to installation, made it easy for the PPI installation team to quickly lift panels as long as 30 ft in to place with 2 or 3 scissor lifts.



Fully designed, engineered and coordinated with lighting and recessed A/V equipment, the unitized panels were fabricated and tested for fit prior to shipping.

Fulton Transit Center

New York, NY



Lower Manhattan's Fulton Street Transit Entrance

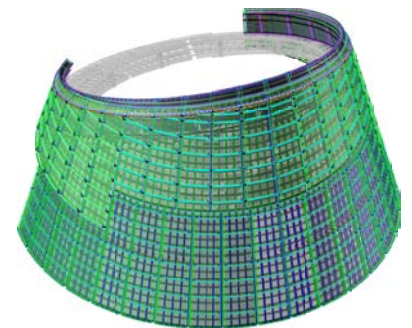
Architect: Grimshaw Architects

General Contractor: Plaza-Schiavone Construction Joint Venture

Sub Contractor: Donaldson Organization

Unitized & Curved Framing Solution Provider: Radius Track Corporation

Designed by Grimshaw Architects, Fulton Center's entry space offers views to the sky through a 60 foot tall conical oculus with a base diameter of 90 feet.



Unitized CFS panels, single sourced by Radius Track® from sub-frame up to finished surface, were used to cost effectively construct this complex feature in the tight urban site.

Designed and modeled in 3D prior to fabrication, the unitized panels and adjacent systems were analyzed for clash detection and fit.



Port Canaveral Exploration Tower & Welcome Center

Port Canaveral, FL



Unitized Panels Reach Skyward at Port Canaveral Welcome Center

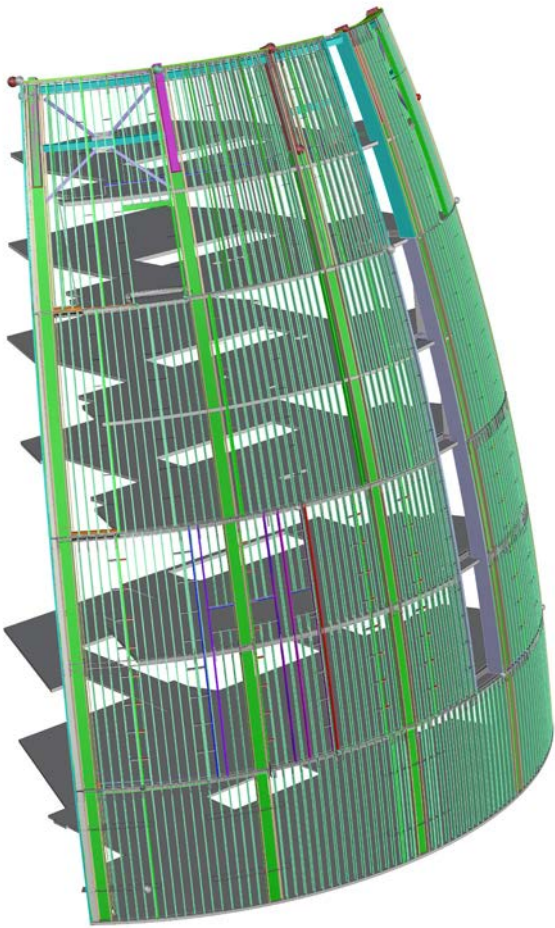
Architect: GWWO Inc./Architects

General Contractor: Skanska

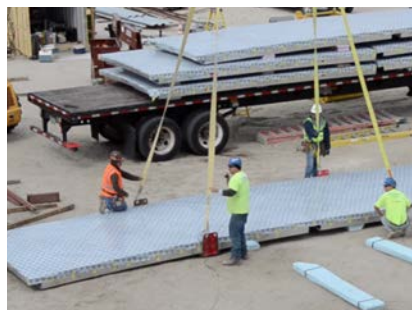
Facade Contractor/Installer: Kenpat USA, Apopka

Unitized & Curved Framing Solution Provider: Radius Track Corporation

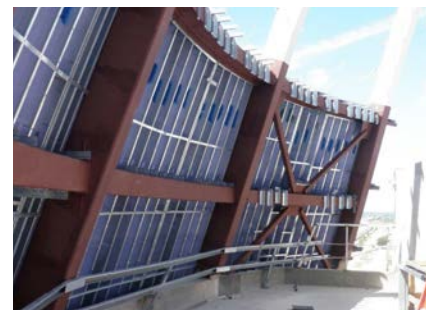
GWWO Inc., architects of the Port Canaveral Exploration Tower & Welcome Center, designed the façade in one elegant compound curve reaching skyward on Florida's legendary Space Coast.



3D Model by Radius Track – Port Canaveral Unitized Facade



Working closely with the project team, Radius Track® created a 3D model to design and coordinate the CFS unitized façade and structural steel connection points.



The Radius Track Unitized panels were delivered to the job site according to sequence of installation and supported by a RTC Design Technologist from design through installation.

Space Shuttle Atlantis Attraction

Kennedy Space Center, FL



Telescoping Arches Bring Multimedia Show to Life

Architect: PGAV Destinations

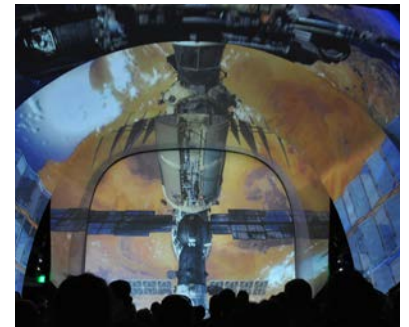
General Contractor: Whiting-Turner Orlando

Unitized & Curved Framing Solution Provider: Radius Track Corporation

On their way to see the Space Shuttle Atlantis attraction, visitors pass through an intimate theater designed by PGAV Destinations. Enclosed with telescoping arches, guests are immersed in a multimedia show.



Radius Track® fabricated unitized CFS framing for the theater's arches using design data extracted from their 3D model used for clash detection and fit.



The preassembled units for the 40' wide x 25' tall arches were set into place by the contractor using GPS coordinates provided by Radius Track.

Hard Rock Café

Tampa, FL



Telescoping Curved Arches Provide Excitement at the Hard Rock Café

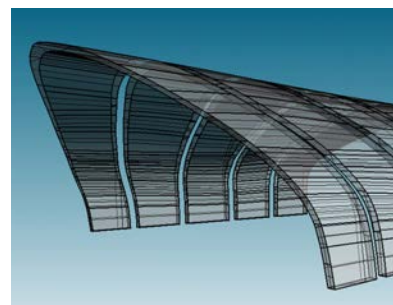
Design Architect: Klai Juba Architects

Project Architect: HKS Architecture

Sub Contractor: KHS&S - Tampa

Unitized & Curved Framing Solution Provider: Radius Track Corporation

Architects for the Hard Rock Café in Tampa created a sense of intimacy in a retrofit of a cavernous space using a series of pre-curved unitized arches.



The series of five back-to-back arches made up of complex, compound curves reach a height of 19 feet, a width of 49 feet and span 41 feet from start to finish.



Using 3D modeling, Radius Track® fabricated the pre-curved framing elements, unitized each section to fit precisely with its neighbor, color coded the panelized units, created installation drawing and shipped the system to the job site ready for assembly.